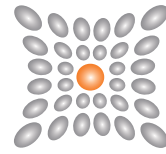


Vision Dual



Pure Power Systems
UPS Systems & Power Quality Specialists



1:1 1100-3000 VA



SOHO



DATACENTRE



USB plug



Hot swap battery



Energy share



Plug & Play installation

HIGHLIGHTS

- **Automatic Voltage Regulation (AVR)**
- **Superior protection**
- **High efficiency**
- **High availability**
- **Versatility**
- **Advanced communications**



The Vision Dual range (tower and rack), includes models from 1100 VA to 3000 VA with sinusoidal digital technology. The Vision Dual range, with its advanced communications and connectivity options, is the ideal solution for installations requiring superior protection and versatility in the power supply system. Vision Dual is the ideal solution for the protection of peripheral network devices, conventional or rack servers, and network back-up systems. Vision Dual has a practical, modern design and includes several performance advantages over traditional on-line UPS. All developed by the Riello UPS research and development team.

The UPS provides efficiency levels of 98% and therefore reduced energy consumption. It has an output power factor of 0.9.

Superior protection

The automatic voltage regulator (AVR) provides protection from surges, overvoltages and undervoltages, without battery intervention. Reduced battery usage ensures that the battery set is 100% available for mains power supply failures and is able to provide greater autonomy. EMI filters then provide further protection from voltage surges and transients. When the mains power supply fails, the load is powered by the inverter and receives a perfectly sinusoidal supply for maximum power continuity and reliability.



Pure Power Systems
UPS Systems & Power Quality Specialists

Tel: +353 (0)1 460 6859 - Fax: +353 (0)1 460 4031
Email: info@ppsystems.ie - Web: www.ppsystems.ie

High availability

An EnergyShare socket allows load-shedding and the shutdown of less sensitive peripheral devices to extend battery runtime for critical loads.

"Hot Swap" batteries can be removed via the front panel for easy and safe UPS maintenance.

For business continuity applications requiring long battery runtimes, battery autonomy can be extended up to several hours using ER models (versions 2200 and 3000) fitted with more powerful battery chargers.

Battery test facility to detect deteriorating battery performance.

Deep discharge protection to reduce battery ageing.

Versatility

Vision Dual can be installed as a tower or in 19" rack cabinets. The display panel can be easily removed and rotated to suit the type of installation required.

Vision Dual is equipped with an emergency power off (EPO) contact that allows for remote shutdown in emergency situations.

Cold Start function to allow the UPS to power up with no mains power supply present.

Vision Dual models have a backlit LCD display providing UPS status information, load and battery performance.

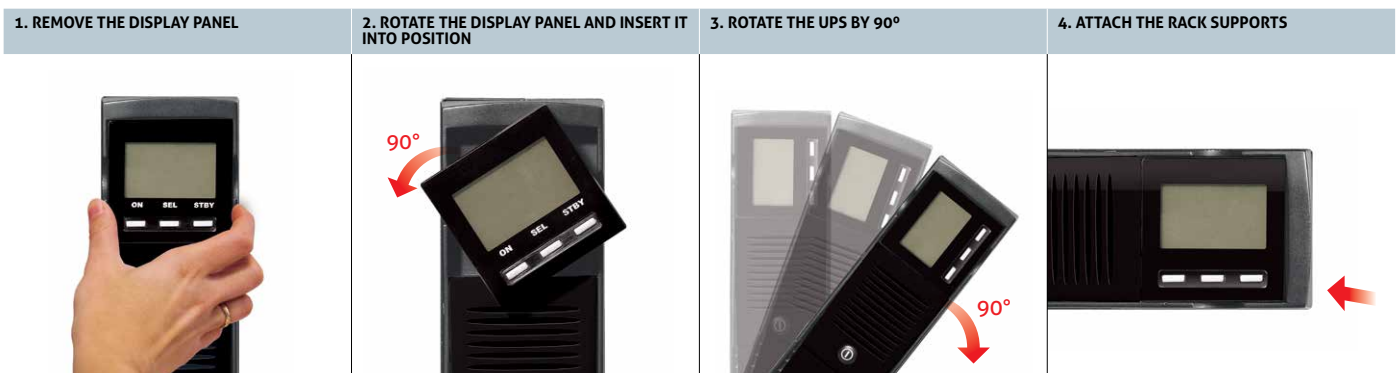
Advanced communications

- Advanced multi-platform communications

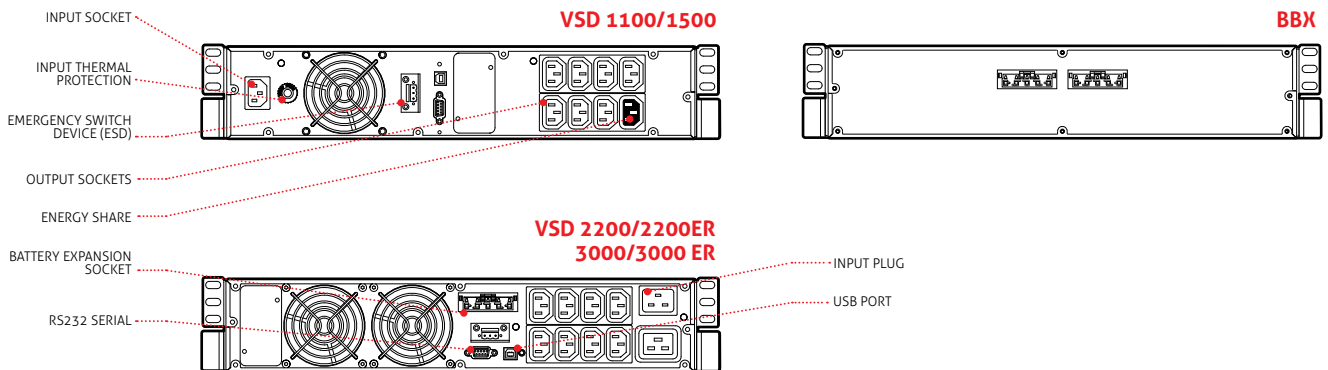
for all operating systems and network environments: PowerShield³ monitoring and shutdown software included, with SNMP agent, for Windows operating systems 8, 7, Hyper-V, 2012, 2008, and previous versions, Mac OS X, Linux, VMWare ESXi, Citrix XenServer and other Unix operating systems

- USB or RS232 serial port interface (selectable)
- Expansion slot for SNMP agent interface boards
- Status, measurements, alarms and input, output and battery parameters available on LCD display.

2-YEAR WARRANTY



DETAILS



OPTIONS

SOFTWARE

PowerShield³
PowerNetGuard

ACCESSORIES

NETMAN 204
MULTICOM 302
MULTICOM 352
MULTICOM 372
MULTICOM 382
MULTICOM 401
MULTI I/O
Interface kit AS400
MULTIPANEL

RTG 100
Manual Bypass 16 A
Manual Bypass 16 A Rack
Automatic Bypass 16 A
Automatic Bypass 16 A Rack

PRODUCT ACCESSORIES

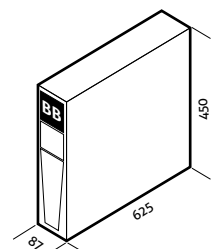
Universal rails for installation in rack cabinets

BATTERY BOX

MODELS

BB SDH 72-A3
BB SDH 72-M1

Dimensions (mm)



MODELS	VSD 1100	VSD 1500	VSD 2200	VSD 2200 ER	VSD 3000	VSD 3000 ER
POWER	1100 VA/990 W	1500 VA/1350 W	2200 VA/1980 W	2200 VA/1760 W	3000 VA/2700 W	3000 VA/2400 W
INPUT						
Nominal voltage	220-230-240 Vac					
Voltage range without battery intervention	162 Vac < Vin < 290 Vac					
Maximum permitted voltage	300 V					
Nominal frequency	50 or 60 Hz ±5Hz					
Frequency range	50 Hz ± 5% / 60 Hz ± 5%					
Power factor	> 0.98					
Current distortion	≤7%					
OUTPUT						
Voltage distortion with linear load / with non-linear load	< 3% / < 8%					
Frequency	Selectable: 50 Hz or 60 Hz or self-learning					
Waveform	Sinusoidal					
Current crest factor	2.5 : 1					
Efficiency ECO and Smart Active Modes	98.5%					
Overload Times	125% for 10 seconds, 150% for 1 second					
BATTERIES						
Type	VRLA AGM maintenance-free lead based					
Recharge time	2-4 hours					
OTHER FEATURES						
Net weight (kg)	16.5	17.5	28	15.5	31.5	16.5
Gross weight (kg)	20	21	33	20.5	36.5	21.5
Dimensions (WxDxH) (mm)	87 x 450 x 425 (2U x 19" x 425)			87 x 450 x 625 (2U x 19" x 625)		
Packaged dimensions (WxDxH) (mm)	240 x 500 x 600			240 x 600 x 760		
Protection against overvoltages	300 joules					
Protections	Overcurrent - short-circuit - overvoltage - undervoltage - temperature - excessive low battery					
Communications	USB / DB9 with RS232 and contacts / Slot for communications interface					
Input plugs	1 IEC 320 C14			1 IEC 320 C20		
Output sockets	8 IEC 320 C13			8 IEC 320 C13 + 1 IEC 320 C19		
Standards	Safety: EN 62040-1 and Directive 2006/95/EL; EMC: EN 62040-2 category C2 and Directives 2004/108/EL					
Operating temperature	0 °C / +40 °C					
Relative humidity	<95% non-condensing					
Colour	Black					
Noise level at 1 m (ECO Mode)	< 40 dBA					
Standard equipment provided	Power cable, serial cable, USB cable, safety manual, quick start guide, user manual on CD-ROM					

